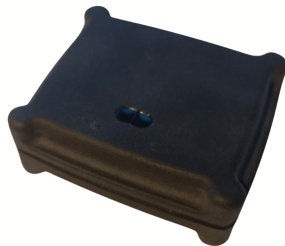


Namdal Ressurs Connect Monitor, NRC2



Namdal Ressurs Container Monitor is a simple to use, robust container monitoring sensor.

The controller is designed with the latest connectivity technology and can be mounted to monitor fill level, emptying and access of most central depot containers.



Key Features

- Cellular Cloud Connected
 - Open Web API
- Multiranging monitoring
 - Point cloud of container fill level
- Movement monitoring
 - Detect emptying
- Access monitoring
 - Detect Hatch/Lid/Door openings and closing

Supported waste management solutions

- Intellicont by Fieldata

Use Cases

- Waste collection route planning
- Container usage data for analytics
- Container location optimisation
- General monitoring, temperature and movement

Technical specifications

Size and Weight

Height: 60 mm With: 70 mm Depth: 25 mm

Weight: 130g

Cellular and Wireless

NB-IoT NB2, B3,5,8,20

LTE-M, B3,5,8,20*

Bluetooth 5.2

Power

Replaceable 3xER14505M Primary Cells**

Typical Service Lifetime 5 Years***

Sensors

64 X Multiranging (4th Gen FlightSense 3D

point cloud) up to 4m with 63° diagonal FoV,

Three-axis Accelerometer and gyroscope,

Temperature, Magnetic (Reed)

SIM Card

Chip SIM (MFF2 UICC)

Environmental Requirements

Operating ambient temperature: -30° to 70° C

Ingress Protection IP69

Mounting

2 x M4 ↓ 8 mm, 53 mm spacing

ReManufacturability

Reusable and recyclable casing

Reusable PCBA

Replaceable Primary Cells

Software Upgrade

LTE Firmware Upgrade Over The Air [FOAT]

BLE Device Firmware Upgrade [DFU]

Namdal Ressurs AS

Tel.: +47 742 81 765

Mail: firmapost@namdalressurs.no

Device API Features (Rest for Configuration and MQTT for events)

Multiranging Cofiguration

- Enable multiranging sensor" (Enable/Disable)
- Set multiranging sensor interval in seconds between range measurements

Multirange Events

- Timestamp
- Array of measurement values in mm. 0 represents measurement failed

Emptying monitoring Configuration

- Enable emptying monitoring" (Enable/Disable)

Emptying monitoring Events

- Timestamp
- Emptying detected

Access monitoring Configuration

- Enable access monitoring" (Enable/Disable)

Access Monitoring Events

- Timestamp
- Access detected (opened and closed)

Modem Configuration

- Maximum Latency Interval (default 64800s)

Modem Events

- Modem metadata (Signal Strength, attach time, cell ID etc)

Battery Events

- Voltage